

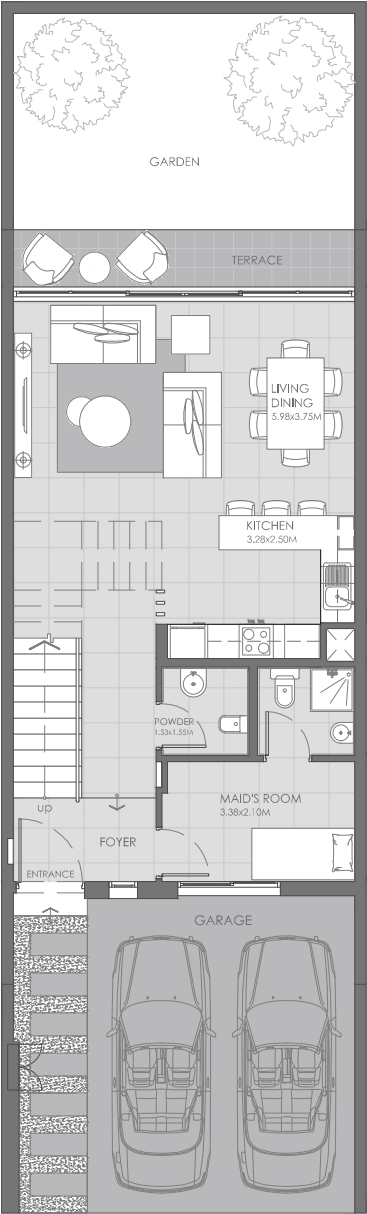


TOWNHOUSE

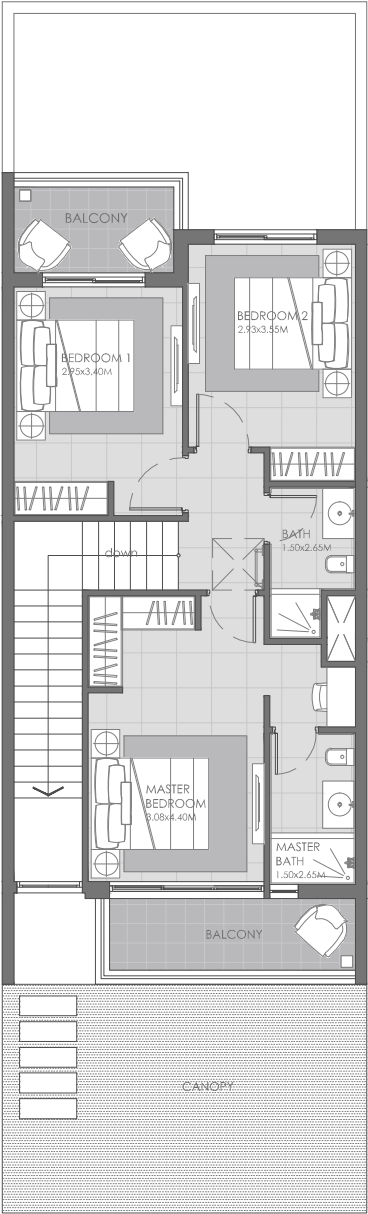
3 Bedroom

3B TOWNHOUSES

TOTAL AREA: 2066.48 sq.ft. 191.98 sq.m.



GROUND FLOOR PLAN



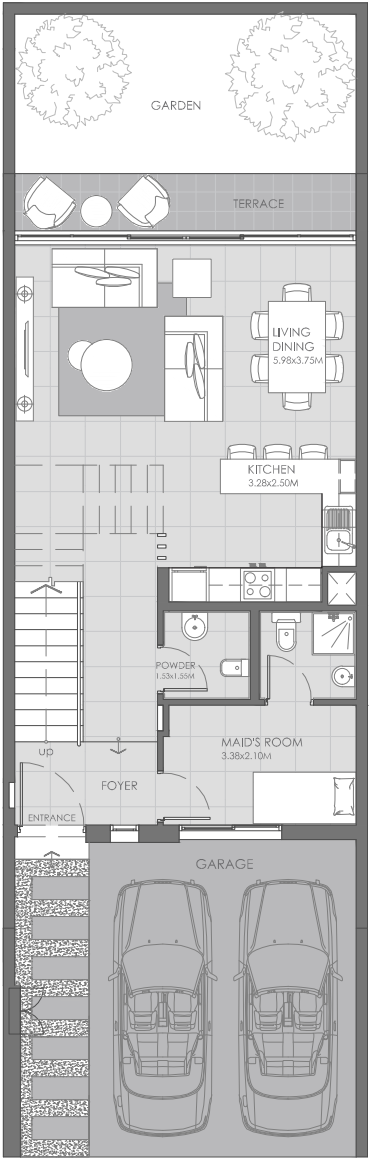
FIRST FLOOR PLAN

1. All dimensions are in imperial and metric, and measured to structural elements and exclude wall finishes and construction tolerances. 2. All materials, dimensions, and drawings are approximate only. 3. Information is subject to change without notice at developer's absolute discretion. 4. Actual area may vary from the stated area. 5. Drawings not to scale. 6. All images used are for illustrative purposes only and do not represent the actual size, features, specifications, fittings and furnishings. 7. The developer reserves the right to make revisions or alterations, at its absolute discretion, without any liability whatsoever. 8. Key Plans are approximate and symbolic.

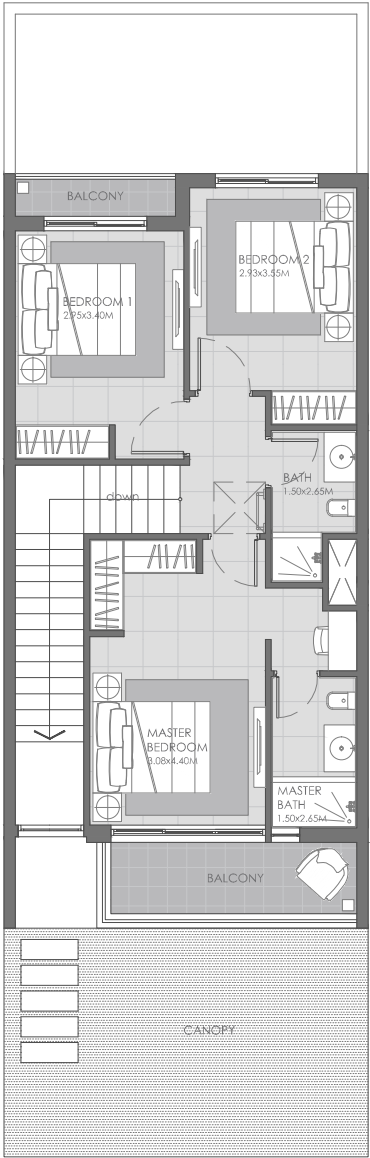


3A TOWNHOUSES

TOTAL AREA: 2031.50 sq.ft. 188.73 sq.m.



GROUND FLOOR PLAN



FIRST FLOOR PLAN

1. All dimensions are in imperial and metric, and measured to structural elements and exclude wall finishes and construction tolerances. 2. All materials, dimensions, and drawings are approximate only. 3. Information is subject to change without notice at developer's absolute discretion. 4. Actual area may vary from the stated area. 5. Drawings not to scale. 6. All images used are for illustrative purposes only and do not represent the actual size, features, specifications, fittings and furnishings. 7. The developer reserves the right to make revisions or alterations, at its absolute discretion, without any liability whatsoever. 8. Key Plans are approximate and symbolic.





MAG

LIFESTYLE DEVELOPMENT

&

PHOENIX

Real Estate Management

FREE
MOVERS

FREE
CLEANERS

FREE
INTERIOR DESIGN

DISCOUNT
IN FIT OUT

FREE
FULL ASSISTANCE

ZERO
COMMISSION

+971 56 656 9801 | www.phoenixrealestate.ae